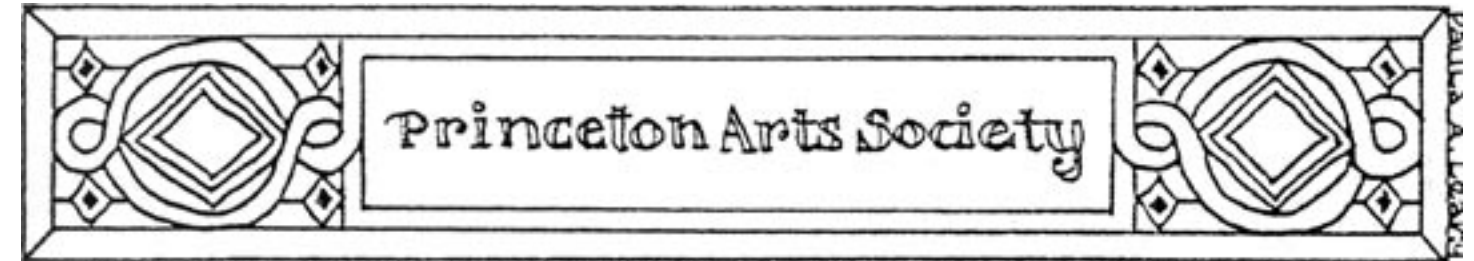


PRINCETON ARTS SOCIETY

PO Box 28, Princeton, MA 01541



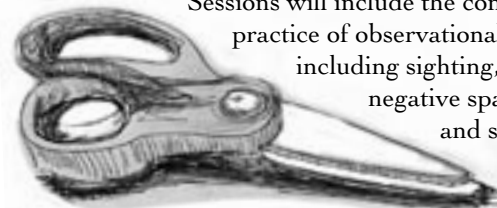
FEBRUARY 2007

CALENDAR OF EVENTS

February 21st – PAS Movie Night – 7-9pm – “Who Gets to Call it Art?” The film covers the artistic movement from abstract expressionism to pop art as seen through the eyes of Henry Geldzahler, who was the first curator of contemporary art at the Metropolitan Museum of Art. Many artists are interviewed (Johns, Lichtenstein, Warhol, Hockney, Stella, Rosenquist, etc.), including old footage and clips of those who have died. The documentary runs for 75 minutes. Refreshments, including popcorn will be provided.



March 1, 8, 15, 22 – 5:50-5pm – Workshop Series #1 – “Essential Drawing Skills” with Bruce Dean This session is for individuals who would like to improve their drawing skills through observation and understanding. Sessions will include the concepts and practice of observational techniques including sighting, contour drawing, negative space, seeing shapes, and shading to create form. Our final drawing will be a still life.



DEAN SKETCHBOOK '07

Registration (to reserve a space): Send a check (Members \$80; non-Members \$100) to Bruce R. Dean, 27 Goodnow Road, Princeton, MA 01541 - make payable to “Princeton Arts Society”
Email questions: brd@theworld.com
 Bruce R. Dean is a National Board Certified Art Teacher, a Master Teacher for Massachusetts, and a recipient of the Massachusetts Outstanding Arts Educator Award. Bruce currently teaches art at Leominster High School, is a working artist, and founder and director of “Explore and Discover: A Museum Classroom”.
Website: <http://exploreanddiscover.com>

PRINCETONARTS.ORG

Who's new on the web? Did you know that as a member you can have a page on the PAS site? Check it out at www.princetonarts.org and send your bio, artist's statement, and jpeg images to bethmellor@verizon.net!

March 6 – 6:50-8:50pm – Second Annual Thomas Prince School Arts Festival PAS members are invited to save the date and participate in one or more of these ways: Demonstrate an art technique; Show some of your own work; Help mount the children's art on Tuesday, Feb 20 in the art room between 9 am and 3pm and hang the show on Friday, March 2 (*volunteers will be gratefully welcomed, and may also be rewarded with food and drink*); Staff a PAS membership & information table; Spread the word to other PAS members and encourage them to attend the show. Please contact Claire Golding at cgolding1@verizon.net or 978-464-2973 if you're interested or need more information.

Community Art Festival
Thomas Prince School
Tuesday, March 6, 6:50-8:50 PM



April 12th – 7-9pm – “Just the Basics” with Joyce Rettstadt Painting with primaries is a technique that is applicable to watercolor, acrylic & oil. The technique is not mine. I learned it in a course taught by Bill Griffiths at the Worcester Art Museum and is a great color trick to simplify color mixing. The technique includes using a system of tetrads which even narrows the field of pigments needed. This will be an informal lecture and “hand's on” demonstration so I ask each participant to bring a sheet of white paper plus a brush and any watercolor paints that they may have on hand. It would also be interesting to bring a photo or a photo from a magazine so that we can view several applications of the tetrad system and try the color matching.



HOLLYHOOKS '05
Recipient of Fitchburg Art Museum's '05 Regional Show Sarah Parker Award (best painting) and Popular Prize

April 27-29th – Jennifer Caswell Mixed Media Sculpture Exhibit – Friday 7-9pm Opening, Saturday 10-4pm, Sunday 12-5pm

May 18-20th – “Sweet Sixteen” The May Members' Show Good news is threefold:
 1. We're thrilled to announce that **James Welu, Director of the Worcester Art Museum** will judge for the awards.
 2. The **Dick Whitney Fund** has increased to \$320. The money is to be awarded as the Dick Whitney Prize in memory of Dick who passed away in October.
 3. And, the **Wachusett Garden Club** is once again gracing our sculpture stands with arrangements inspired by the exhibited art. *You must be a member in good standing to participate in the show. If you have not yet paid your dues this newsletter will be marked as such. Please return the form at the back of the newsletter to us right away. Thank you if you have already paid!*

Thank you if you have already paid in response to our recent mailing!

PRINCETON ARTS MEMBERSHIP DUES FORM – SEPT 06 THROUGH AUG 07

Please send payment to the Princeton Arts Society, PO Box 28, Princeton, MA 01541

- \$25 Individual membership
- I am an artist, my medium is _____
- \$35 Family membership
- I am a friend of the arts
- \$60 Sustaining membership
- I'd like to be included as a member artist on www.princetonarts.org

Name _____ Mailing Address _____

City _____ State _____ Zip _____ Phone _____

Email address (please print clearly) _____

In an effort to reduce mailing costs we will be sending announcements related to Princeton Arts programs and calendar updates by email. If you prefer not to receive email announcements from PAS check here Thank you.

We are always in need of volunteers. It's a lot of fun and always creative. Please help us be the best that we can be!

I would like to help with programs shows publicity meetings other _____

We welcome your comments, please talk to us! _____

SLATE OF OFFICERS FOR 2007

President	Bruce Dean	978.464.2447
Vice President	Susan Ulrich	978.464.2378
Treasurer	Naoko Gomi	978.464.0532
Corresponding Secretary	Mary Trostel	978.464.2469
Recording Secretary	Lou Trostel	978.464.2469

Board of Directors

3 year term 'til August 2009	Jennifer Caswell	978.464.2691
	Heather March	978.464.5368
	Claire Golding	978-464-2973
2 year term 'til August 2008	Pat Peterson	978.464.2478
	Beth Mellor	978.464.5703
	Unfilled	
1 year term 'til August 2007	Bob Shelton	978.464.2720
	Bonnie Besse	
	Victoria Mulligan	508.756.7674

Program Chairs

Exhibits Chair	Jean Murphy	508.764.6735
Programs Chair	Terry Breidenbach	978.464.5557
	Susan Shelton	978.464.2720
Hospitality	Program Hosts	
Publicity	Bobbie Samdahl	978.464.5796
Newsletter	Beth Mellor	978.464.5703

EVENT UPDATES

For those of you who wondered about what the Portrait Marathon was in the previous newsletter... **The Portrait Marathon** was a fund raising event where six PAS artists created portrait sketches of your child (eight years old or older, who could sit still for 30 minutes) for purchase at the end of the day. **Sharon Bahosh, Rosalie Lazarus, Jean Murphy, Merry Pratt, Sid Solomon,** and **Lynn Wrona** stepped in to help with the event. Each portrait was \$60.00 with a discount if two sketches were bought of the same child. The event was realized by **Jean Murphy**, with a little suggestion by **Naoko Gomi**. The Portrait Marathon generated \$170.00 for the PAS, which covered our rising rent costs. All of us involved thought it was a success, and do plan to hold the second Portrait Marathon in October 2007.

Annual Members' Small Works Show, Dec. 1,2,3, 2006. The show featuring 26 member artists brought in \$371.75 for PAS from sales commissions of over half of the participating member artists. (That's two months' rent!) *Thank you all for your hard work!*

WANTED

We're looking for a donation of 18" shelving and/or a locked cabinet with a shelving depth of at least 24" for the Princeton Arts Society space at the Princeton Center building. Please contact bethmellor@verizon.net if you have something available.



The prolific portrait group meeting in the Princeton Arts space of the Princeton Center Building.

MEMBER NEWS

Joyce Rettstadt had a show of giclee prints at Two Biotech, UMass Medical School during the month of December, 2006.

Sid Solomon had a show of 30 local scenes in oil at the Worcester Public Library during the month of Nov. He is also represented in the Worcester Artist Group Members Show in their new gallery on Tainter St. He is part of a current exhibit at The Worcester Art and Frame Gallery on Norwich St., Worcester.

Lynn Wrona and **Jean Murphy** are part of a February exhibit at the Sturbridge Bread Co., Sturbridge called "In The Kitchen".

Lynn Wrona will also be demonstrating an oil Still Life at the April meeting of Massoit Art Guild, Spencer and a pastel Still Life at the Tobacco Valley Art Association, Somers, CT.

Monica Kozma, a member of the Portrait Group, has moved to Boulder Colorado where she is pursuing her passion for art.

The Life Drawing Group at Worcester State College is now meeting on Monday nights, 7:30 to 9:30 pm. The Group meets at the Art Studios in the Gymnasium Bldg. of Worcester State College. The cost is \$6 per person for the model's fee and is open to the public. For more information call **Sid Solomon** at 508-852-8860.

A new museum in Clinton called **The Museum Of Russian Icons at 203 Union St.** includes the collection of Gordon Lankton of Nypro. It contains over 200 icons collected from Russia of 15th through 21st Century artists. It is open Tuesdays through Saturdays from 11am to 3pm.

SEND US YOUR MEMBER NEWS!

Are you exhibiting, teaching, or experiencing an exciting career change? We'd love to list your member news in the next issue. Please send the details by e-mail to bethmellor@verizon.net or by US mail to the Princeton Arts Society, PO Box 28, Princeton, MA 01541.

PRINCETON ARTS PRINTS

Limited edition prints available for sale with all proceeds to benefit the Princeton Arts Society. Available framed/unframed in this series:

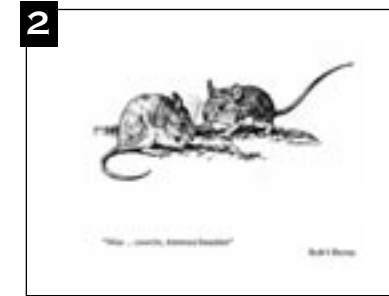
1. Vernon Hall's "Princeton Post Office, Christmas 1984" – 8.5x10 color, 11x14 natural wood frame

2. George Frederick Mason's "Wee... cowrin, timrous beasties" – 5.5x6.5 b/w, 8x10 black wood frame

3. Marilyn Pratt's "Upper Common – Princeton Massachusetts" – signed 8.5x11 b/w, 11x14 black wood frame

4. Barry VanDusen's "Black-throated Blue Warbler, (*Dendroica caerulescens*)" – signed 11x14 color, 16x20 natural wood frame

5. Rosalind Sturges Allen's "Keyes Brook – E. Princeton, Mass." – signed 8.5x11 b/w, 11x14 black wood frame (comes with *Susan Roney-O'Brien's* companion "Keyes Brook" poem.)



Perfect gift for your favorite Princeton person! Please contact Beth Mellor for information at 508-450-2241 or bethmellor@verizon.net. If interested in ordering prints please use the order form below. Thank you!

PRINCETON ARTS PRINTS ORDER FORM

Please circle the print(s) of interest and send payment to the Princeton Arts Society, PO Box 28, Princeton, MA 01541

- | | | |
|--|--|---|
| 1. Vernon Hall unframed \$ 20 | 3. Marilyn Pratt unframed \$ 20 | 5. Rosalind Sturges Allen unframed \$ 20 |
| Hall 11x14 natural wood frame 45 | Pratt 11x14 black wood frame 45 | with poem by Susan Roney-O'Brien |
| 2. George Frederick Mason unframed 10 | 4. Barry VanDusen unframed 40 | Sturges Allen 11x14 black wood frame 45 |
| Mason 8x10 black wood frame 25 | VanDusen 16x20 natural wood frame 85 | with poem by Susan Roney-O'Brien |

Name _____ Street Address _____

City _____ State _____ Zip _____ Phone _____